



# SEMBA NEWS

Volume 18 Number 3 Newsletter of the Southeastern Michigan Beekeepers' Association

April – May 2008

## SEMBA SPRING MEETING

When: Sunday, April 20, 2008 1:30- 4:00 p.m.  
Where: Schoolcraft College, Lower Waterman Center, 18600 Haggerty Road, Livonia, MI. Park in the north parking lot and enter through the VisTaTech entrance.

Potluck: 1:30 p.m. Bring a dish to pass and your own table service. Coffee and tea will be provided by SEMBA. (Label any utensils with your name.)

Program: 3:00 p.m.

“One year of Beekeeping -- The Beginner”  
~ Fritz Sanders

**Presentation Committee Meeting, 4:00 p.m.**

## SCHOOLCRAFT BEE CLUB MEETING

When: Tuesday, May 6, 2008 at 7:30 p.m.

Where: Schoolcraft College, Lower Waterman Center, 18600 Haggerty Road, Livonia, MI.

Program: “Spring Management in May”

~ Master Beekeeper, Ed Nowak

Refreshments are welcome

## SEVEN PONDS BEEKEEPERS' CLUB

Club meetings are held the fourth Tuesday of each month at the Seven Ponds Nature Center in Dryden, MI. For information call Terry Toland, 248- 421-6601.

## QUEEN REARING COURSE FULLY ENROLLED

The Queen Rearing Course conducted by Dr. Larry Connor in May and June, 2008 will be held at the Nowak apiary in Livonia. Hands-on training in queen rearing will be provided with the clear objective of each student becoming competent in the basics of raising queens and mating them in mating nucs.

Dates and times for the course:

Friday, May 30..... 4 p.m. - 8 p.m.

Saturday, May 31..... 1 p.m. - 5 p.m.

Sunday, June 1..... 1 p.m. - 5 p.m.

Tuesday, June 10.... 4 p.m. - 8 p.m.

Saturday, June 28..... 9 a.m. - 1 p.m.

Saturday, June 28..... 2 p.m. - 5 p.m.

## LATE SPRING MANAGEMENT PRACTICES DURING DANDELION BLOOM – (Mid to late April)

Source: Connecticut Beekeepers' Newsletter

Remove mouse guards (entrance reducers) about the time when dandelions blossom. Take down windbreaks and unwrap hives about the same time.

Move top brood box from hive and switch it with the bottom brood box on a windless day when temperatures are 55°F or above (called reversing). Remove dead bees and trash from the bottom board.

Place foundation near the center of the upper deep for brood nest expansion. Do not place between brood frames.

Check weather forecasts, as bringing brood down near the entrance may kill some brood if the weather turns cold. This reversing of the brood boxes often prevents swarming.

Check for laying queen and adequate honey and pollen stores. Feed again if needed.

Unite any weak or queenless colony with another. Feed light colonies until honey flow.

Requeen where needed. Some beekeepers prefer to requeen in April, while others follow this step in late August. Some beekeepers rely on natural supersedence and never requeen, which is best if you plan to maintain your old stock.

Clean bottom boards, and replace broken frames, worn or damaged foundation. Clean excess propolis from frames and replace damaged hive parts. Do this about apple blossom time on a warm day (70°F).

Look for signs of swarming. The old queen swarms after the cells are sealed. If you cut all the cells, your hive could become queenless.

## HELP! MY 60 POUND BUCKETS OF HONEY ARE CRYSTALIZED

Hello Roger,

I am a SEMBA member and the honey I extracted this Fall has hardened in my 5 gallon plastic buckets. (I have kept them in my house so they have been relatively warm.) One bucket is very thick while the

other is pourable but granular in taste. What have I done wrong, and what can I do to fix this problem? I would love to have some advice.

~ Dan Inman

Dan,

You have done nothing wrong. Strained honey usually contains small sugar granules and pollen grains upon which sugar crystals build to create a semi-solid honey--creamed honey. Some floral sources will granulate more readily than others; it depends upon the sugars in the nectar. If there is more fructose than glucose, it will probably not granulate. But if there is more glucose than fructose, it will granulate. The more pollen grains and small sugar granules (seed), the more granulation. Temperature is also a factor. Temperature in the hive is about 100 degrees when bees are ripening honey. We store extracted honey at temperatures of 50 to 70+ degrees which is ideal for crystal development.

You need to warm the buckets of honey in some way to liquefy the contents. I use a thermostatically controlled water-bath tank. Some beekeepers use a covered stack of deep supers with a lighted bulb below for a warming chamber or an old refrigerator cabinet with a lighted bulb. In some cases, beekeepers ladle out the honey into glass bottles and then warm them in the oven at a very low temperature until the honey is liquefied.

## APITRACK NEWS

If you would like to sign up for a weekly update on apiculture news from around the world, go to Google or another search engine and type in 'Apitrack News Sign Up'.

The following two articles were included in the December 2007 Apitrack Newsletter #97:

### **USA --EFFECTS OF HONEY IN NOCTURNAL COUGH, *Pediatrics and Adolescent Medicine*--**

a paper prepared by Ian M. Paul, MD, MSc; Jessica Beiler, MPH; Amyee McMonagle, RN; Michele L. Shaffer, PhD; Laura Duda, MD; Cheston M. Berlin Jr, MD. "Significant differences in symptom improvement were detected between treatment groups, with honey consistently scoring the best and no treatment scoring the worst." "Honey may be a preferable treatment for the cough and sleep difficulty associated with childhood upper respiratory tract infection."

[archpedi.ama-assn.org/cgi/content/short/161/12/1140](http://archpedi.ama-assn.org/cgi/content/short/161/12/1140)

### **USA – A STUDY ON FRUIT FLY UNVEILS INFORMATION ABOUT BEES' IMMUNOLOGIC SYSTEM**

The fruit fly, *Drosophila*, is often used as a model organism in genetic studies. Researchers analyzed

immune genes in 12 species and reported that the study offers new information on the immune system of the honey bee. The analysis of the *Drosophila* genes related to immunity was conducted by the ARS entomologist Jay Evans at Bee Research Laboratory, maintained by ARS in Beltsville, Maryland, and researchers at Cornell University in Ithaca, New York, Emory University in Atlanta, Georgia, and Umea University in Umea, Sweden. The results were recently published in the journal '*Nature Genetics*'.

## **IDEAS AND EQUIPMENT SUGGESTIONS FOR CONSTRUCTION OF AN APPROVED HONEY HOUSE**

The following communication was sent to us by Paul Mrozek and Sharon Parish of Day Lake Apiary, 63249 Day Lake Rd., Cassopolis, MI 49031:

We had been selling honey at the Farmer's Market in Cassopolis, Michigan without any problems for four years. But, on June 16, 2007 everything changed for us. An inspector from the State of Michigan Department of Agriculture, Food and Dairy Division, informed us we had to be licensed by the State of Michigan and could no longer sell honey at the market. Well, the first thing we did was panic. How could we afford a honey processing house with only 5 hives? We called Tiny of Dadant & Sons and picked his brain for some answers. He gave us the basics of what we would need. Also, he told us to talk to Klein & Sons. We did and we went to work. This is what we did and the inspector was very pleased and it did not cost a arm and leg:

- 1). We had a room in the back of the garage; we painted the ceiling and walls with white washable commercial paint. (The room is separated from the garage by a door.)
- 2). We sealed the floors with a commercial sealer.
- 3). We make sure that the lights had shields on them.
- 4). Hot and cold running water in the building. (We put a separate 6 gallon hot water heater in the building). You may need to get your water tested. (Check with the inspector.) Double-sinks, fiberglass is permitted.
- 5). Bottling table was placed where water will not come in contact with honey.
- 6). A small-compact refrigerator to store whipped honey.
- 7). Trash can, soap, paper towels, sanitizer (2 caps of bleach to 5 gals of water).

- 8). Storage box for cap scraper, bottle caps, labels, and seals (bought at Wal-Mart for less than \$14), storage shelves for jars, buckets and other items. (Make sure supplies are not stored on the floor.)
- 9). Make sure that windows had screens on them to keep out insects and other pests.
- 10). Make sure the extractor is clean. (We put ours on a stand which we built and painted with the non-toxic commercial paint.)
- 11). No pesticides or chemicals of any kind should be stored in the bottling room.

All of this has cost us around \$1,500; it may cost more depending on what is needed on an individual basis. (Note: We did the work ourselves which saved of ton of money.)

We wish to thank Tiny of Dadant and Mr. & Mrs. Klein for their support and concern. It is nice to know that someone cares for the small beekeeper.

#### **NATIONAL POLLINATOR WEEK**

The Pollinator Partnership has announced that the second Annual National Pollinator Week will be celebrated June 22 - 28, 2008. Beekeepers in each state are invited to spread the pro-pollinator message by planning a National Pollinator Week in their own state. Any planned event can be e-mailed to [info@coevolution.org](mailto:info@coevolution.org) so that it can be publicized on [www.pollinator.org](http://www.pollinator.org)

#### **NORTHERN STATES QUEEN BREEDERS' ASSOCIATION**

A new queen breeders association, called the Northern States Queen Breeders' Association, (NSQBA) is being formed.

The focus of the association is for the improvement of northern genetics, a queen exchange program thus allowing diversification of genetics between members, and the ability of queen breeders to come together and learn from one another. For a brief outline and additional information, please see [www.NSQBA.com](http://www.NSQBA.com) or call Mike Thomas at 717-938-0444.

#### **IN MEMORIAM**

Helene Grobsorean, age 84, wife of Carl Grobsorean, passed away May 11, 2007. Her burial took place on their 62 wedding anniversary.

During WWII, Carl served 23 months on a destroyer in the Romanian Navy. He and Helene were married May 16, 1945. They emigrated from Germany in February, 1952 with their three young children, ages 6, 5 and 2 months. In 1966, Helene donated a kidney to her son, now deceased. Helene is survived by her husband Carl, two children, and four great grandchildren-- Kayla, Karl, Kennedy, and Kanner Kubica.

Carl, who keeps his bees on Harsens Island, has been a SEMBA member since 1992. His granddaughter Jenifer, a third generation beekeeper, helps him with the bees.

#### **PRESENTATION COMMITTEE FORMED**

John Kates, chairman of the Presentation Committee, has called for the first meeting of the newly-formed committee to be held at 4:00 p.m. following SEMBA's potluck on April 20, 2008 at Schoolcraft College.

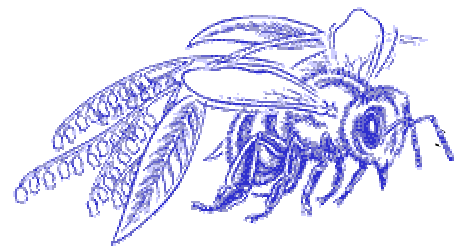
The committee will be deciding upon committee goals and procedures to help beekeepers, educators and others to make more effective presentations to schools, nature centers and other groups. The committee will also be making recommendations to ask SEMBA to purchase photos, charts, observation hives and other visual props to be made available to SEMBA members. Anyone is welcome to attend.

#### **Dues Reminder**

If your address label denotes A08, your dues are now due. Enclosed is a renewal form for your convenience. Please note that dues for the Michigan Beekeepers' Association (MBA) also can be paid or renewed when paying SEMBA dues.

#### **PRESIDENTS CORNER**

Many thanks to the SEMBA members who helped make the 70<sup>th</sup> Annual Beekeeping Conference a success. Volunteers were: Terry Toland, Winn Harless, Mary Hobart, Dennis and Donna Holly, Mike Siarkowski, Bill Sirr, Keith Lazar, Ann Kerwin, Donna and Howard Laws, Ed Nowak, Frances Alloway, Teresa and



Walter McCurdy, Ken Schramm, Zachary and Joyce Huang, Fritz Sanders, Larry Yates, Jim Goodrich, Paul Mazur, Mack Clausel, Jim Zabloutny, Ron and Judy Forfinski. A special thanks is due Roy Hendrickson from Chardon, Ohio for agreeing to be our conference speaker after a last moment cancelation by Diana Sammataro.

More than 200 beekeepers attended the conference. The winner of the hive raffle was Tom DeMeritt, a new SEMBA member from Jeddo, MI.

- ✓ **Mid Michigan Beekeepers' Club** is now meeting at 5381 N. State Rd., (M15) Davison, MI, on the first Thursday of every month. Call Jim Dodder (810-653-8547) for additional information.

#### SEMBA Bargain Corner

- SEMBA caps, available at meetings. Call 734-668-8568 to order.
- SEMBA DVD "How I Got Started In Beekeeping". Call 734-668-8568 to order.
- Package bees from Georgia will arrive April 26, 2008. 2# \$58, 3# \$66. SEMBA members will receive a \$5 discount per package. There is 10 package limit. Call Mike Siarkowski, 517-545-0824 to place orders. Bees can be picked up at Shaun Shubel's home, 345 Chilson Rd., Howell, MI, 517-548-5176.
- Package bees (Italian) from Wilbanks Apiary, Georgia. Pick-up dates April 19 and May 3. 3# package - \$67. Call Blanche Barber, 248-634-7017 for more details.
- Package bees: Call Jerry Dunbar, 586-770-9953.
- Hive equipment and systems. Keith Lazar, C 248-361-1710 or P 248- 815- 5522.
- Small beekeeper looking for a place to put one or possibly two colonies, year round. Preferably west or north of Ann Arbor. Kevin 517- 596-3084. [k10walker@hotmail.com](mailto:k10walker@hotmail.com)
- 9 shallow supers with drawn comb, 4 shallow supers with honey still in, all badly moth damaged. 5 shallow supers with plastic foundation (not drawn), 4 empty deep boxes, hive tops and bottom boards, hand foundation wiring board, brand new electric wire embedder, queen excluders, plastic cut comb boxes, escape boards (home made), new swarm catch box, new cut comb boxes, 20 dozen quart canning jars. Call Rick at 248-672-2200.
- Mellow tasting wildflower honey, 32 oz. plastic jugs or 16 oz. wide-mouth jars. Call Mark @ 734-761-6836 or E-mail: [Mark@KorzonLandscapes.com](mailto:Mark@KorzonLandscapes.com)
- 60 lb pail of honey. Call Jeff Brown, 734-837-3800.

#### Notice:

- Honey for sale or honey wanted: Send your name to the Sutherlands, 5488 Warren Rd., Ann Arbor, MI 48105, or [rsuther@hotmail.com](mailto:rsuther@hotmail.com) Names will be printed in the next newsletter and posted on the sembabees.org Web pages.

Ads in the Bargain Corner are free to SEMBA members. To place an ad, contact Roger Sutherland, [rsuther@hotmail.com](mailto:rsuther@hotmail.com) or call 734-668-8568.

A men's X-LG brown suede jacket was left at the SEMBA Beekeeping Conference. For more information call Roger Sutherland 734-668-8568 or [rsuther@hotmail.com](mailto:rsuther@hotmail.com)

Southeastern Michigan Beekeepers' Association  
*Organized April 1, 1934*

SEMBA Membership  
5488 Warren Road  
Ann Arbor, MI 48105-9425

Oakland Beekeepers' Club



Schoolcraft Beekeepers' Club



Seven Ponds Beekeepers' Club

